

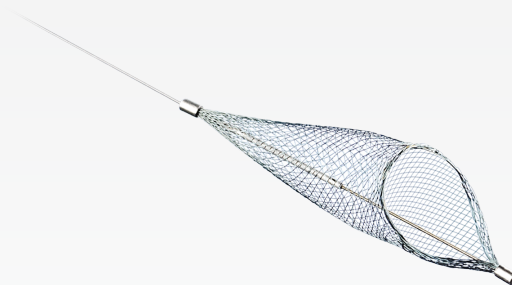
CAROTID SOLUTIONS



Protégé™ RX
Carotid Stent System



MO.MA ULTRA™
Proximal Cerebral
Protection Device



SpiderFX™
Embolic Protection Device

MO.MA ULTRA™

Proximal Cerebral Protection Device

Full-time Protection and Control.*

Guide-catheter Technology

- Provides excellent trackability, support, and stability for ease of lesion crossing and accurate stent deployment.

Effective Aspiration

- Working channel exit port distal to common carotid artery balloon provides lesion access and effective, efficient aspiration of debris.¹

Radiopaque Markers

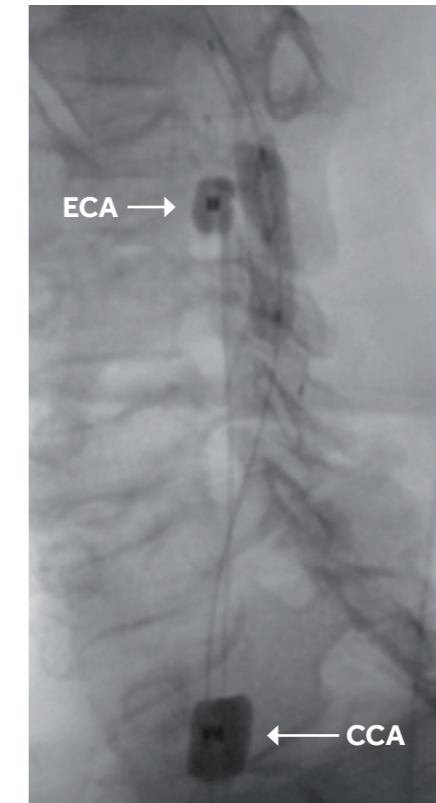
- Centrally located in each balloon for precise positioning and orientation.

High Capture Efficiency

- Removal of all sizes of debris through aspiration.[†]



Protect and Control (pre-procedure)



Treat (Device in Use)



Aspirate** (post-procedure)
Individual results may vary.



MONO-OCCLUSION BALLOON SYSTEM

In case of occlusion of the external carotid artery (ECA), the system utilizes one highly compliant, elastomeric balloon in the common carotid artery (CCA) that provides atraumatic flow suspension and stability.



DOUBLE-OCCLUSION BALLOON SYSTEM

Utilizes highly compliant, elastomeric balloons that provide atraumatic flow blockage and stability.

*Test data on file at Medtronic. Bench test results may not be indicative of clinical performance.

†See Instructions for Use for complete procedure requirements.

**Images courtesy of Dr. Alberto Cremonesi, Villa Maria Cecilia, Cotignola (RA), Italy.

¹Data on file at Medtronic.

SpiderFX™

Embolic Protection Device

Capture What Matters.

Guidewire of Choice

- Works with 0.014 inch or 0.018 inch guidewire to cross challenging carotid lesions.

Extensive Portfolio

- Treat vessels from 3 mm to 7 mm with a variety of sizes; available for carotid interventions; also available for peripheral and SVG interventions.

Filter Stability

- Controlled filter positioning throughout the intervention and during device exchanges.
- Braided nitinol design provides full-wall apposition.
- Capture wire designed to rotate and move longitudinally independent of the filter.

Enhanced Visibility

- Clearly visible radiopaque markers and direct mouth indicator enable quick and controlled positioning of the filter throughout the intervention.

3.0 mm 4.0 mm 5.0 mm 6.0 mm 7.0 mm



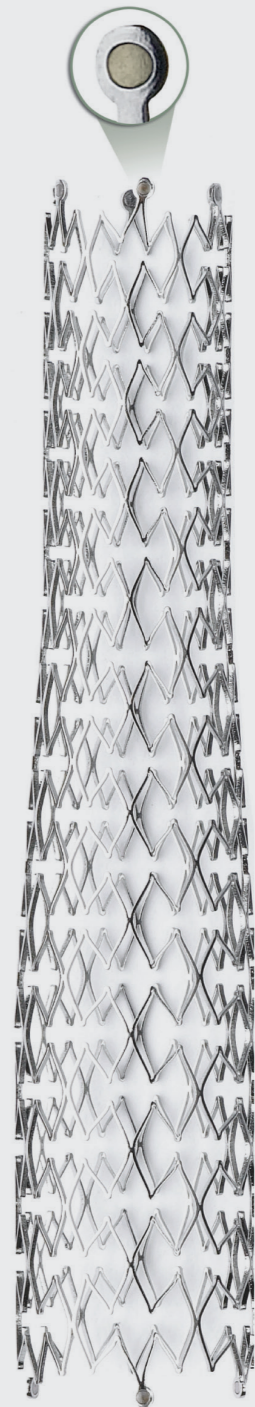
Protégé™ RX

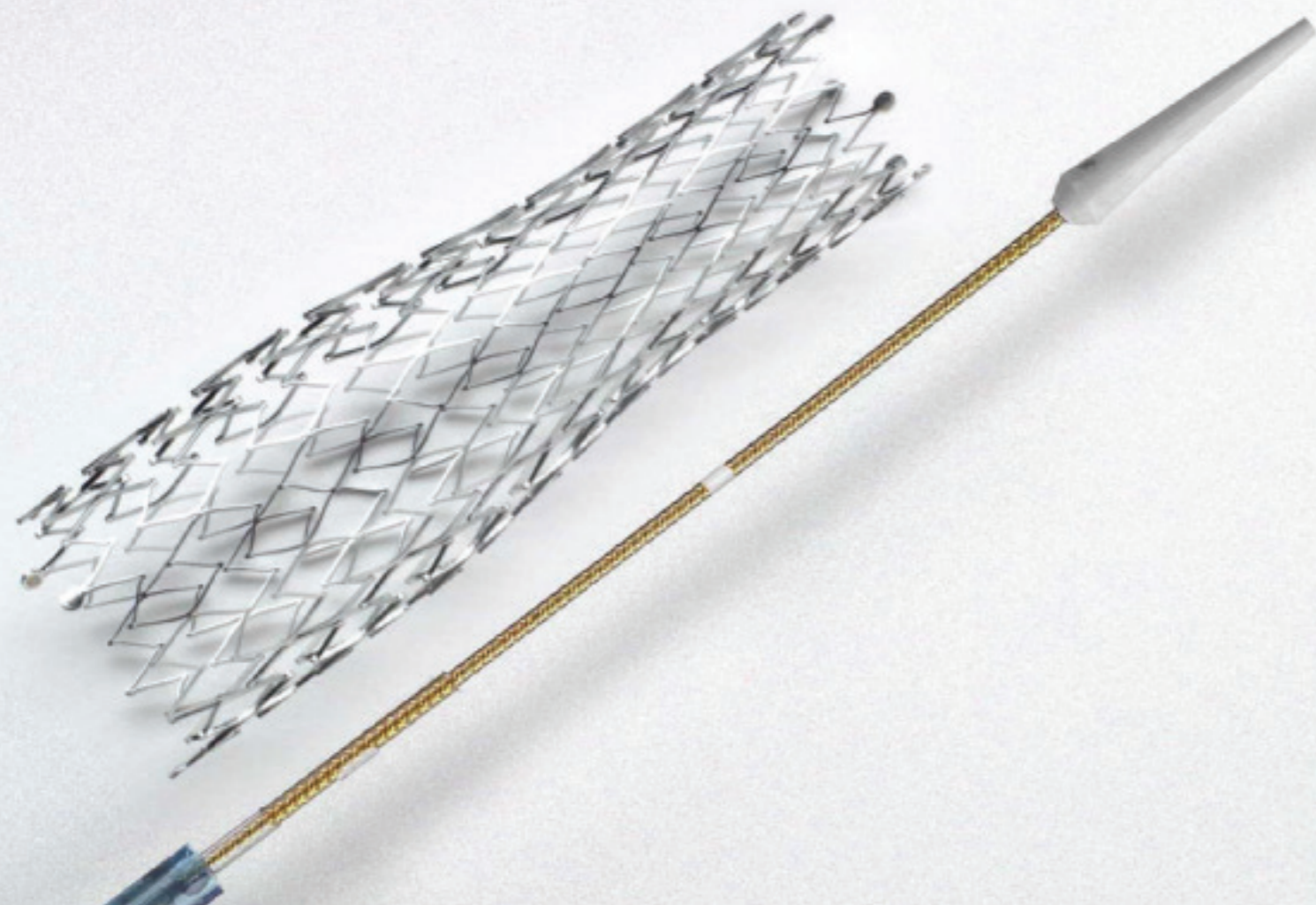
Carotid Stent System

Predictable Deployment. Visible Results.

Predictable Deployment

- EX.P.R.T.™ deployment system holds stent securely in place to prevent premature deployment or "jumping."
- Minimal stent shortening.
- Unique anatomically designed tapered stent for better fit in the carotid bifurcation.
- 0.014 inch rapid exchange catheter with 6 Fr low crossing profile and flexible atraumatic tip.
- Straight and tapered options for customized fit in carotid vessels.





Visible Results

- Tantalum stent markers enhance visibility for precise positioning and result confirmation.
- Cell design produces expansion force that resists compression while providing excellent wall apposition.
- Radiopaque marker on catheter clearly indicates tapered location for precise positioning.

ORDERING INFORMATION

MO.MA ULTRA™ Proximal Cerebral Protection Device

Reference Number Double-balloon	Minimum Sheath Size (Fr)	Inner Diameter of the Working Channel
MOM0130068X5	8	0.069"/1.76 mm
MOM0130069X6	9	0.083"/2.12 mm
Reference Number Mono-balloon	Minimum Sheath Size (Fr)	Inner Diameter of the Working Channel
MOM0130008X5	8	0.069"/1.76 mm

SpiderFX™ Embolic Protection Device

Reference Number	Filter Size (mm)	Target Vessel Size (mm)	Capture Wire		Delivery End	Recovery End	Guide Catheter/Sheath
			Wire Length OTW/RX (cm)	Wire Diameter (in/mm)	Crossing Profile (Fr)	Diameter (Fr)	Minimum ID (in)
SPD2-030-190	3.0	2.0-3.0	190	0.014/0.36	3.2	4.2	0.066
SPD2-030-320	3.0	2.0-3.0	320/190	0.014/0.36	3.2	4.2	0.066
SPD2-040-190	4.0	3.1-4.0	190	0.014/0.36	3.2	4.2	0.066
SPD2-040-320	4.0	3.1-4.0	320/190	0.014/0.36	3.2	4.2	0.066
SPD2-050-190	5.0	4.1-5.0	190	0.014/0.36	3.2	4.2	0.066
SPD2-050-320	5.0	4.1-5.0	320/190	0.014/0.36	3.2	4.2	0.066
SPD2-060-190	6.0	4.5-6.0	190	0.014/0.36	3.2	4.2	0.066
SPD2-060-320	6.0	4.5-6.0	320/190	0.014/0.36	3.2	4.2	0.066
SPD2-070-190	7.0	5.5-7.0	190	0.014/0.36	3.2	4.2	0.066
SPD2-070-320	7.0	5.5-7.0	320/190	0.014/0.36	3.2	4.2	0.066

Protégé™ RX Carotid Stent System

Reference Number	Unconstrained Stent Diameter (mm)	Unconstrained Stent Length (mm)	Recommended Lumen Size (mm)	Usable Catheter Length (cm)	Sheath Size (Fr)	Guidewire Acceptance
------------------	-----------------------------------	---------------------------------	-----------------------------	-----------------------------	------------------	----------------------

STRAIGHT

SEPX-6-20-135	6	20	4.5-5.5	135	6	0.014
SEPX-6-30-135	6	30	4.5-5.5	135	6	0.014
SEPX-6-40-135	6	40	4.5-5.5	135	6	0.014
SEPX-6-60-135	6	60	4.5-5.5	135	6	0.014
SEPX-7-20-135	7	20	5.5-6.5	135	6	0.014
SEPX-7-30-135	7	30	5.5-6.5	135	6	0.014
SEPX-7-40-135	7	40	5.5-6.5	135	6	0.014
SEPX-7-60-135	7	60	5.5-6.5	135	6	0.014
SEPX-8-20-135	8	20	6.5-7.5	135	6	0.014
SEPX-8-30-135	8	30	6.5-7.5	135	6	0.014
SEPX-8-40-135	8	40	6.5-7.5	135	6	0.014
SEPX-8-60-135	8	60	6.5-7.5	135	6	0.014
SEPX-9-20-135	9	20	7.5-8.5	135	6	0.014
SEPX-9-30-135	9	30	7.5-8.5	135	6	0.014
SEPX-9-40-135	9	40	7.5-8.5	135	6	0.014
SEPX-9-60-135	9	60	7.5-8.5	135	6	0.014
SEPX-10-20-135	10	20	8.5-9.5	135	6	0.014
SEPX-10-30-135	10	30	8.5-9.5	135	6	0.014
SEPX-10-40-135	10	40	8.5-9.5	135	6	0.014
SEPX-10-60-135	10	60	8.5-9.5	135	6	0.014

TAPERED

SEPX-8-6-30-135	8/6	30	(6.5-7.5)-(4.5-5.5)	135	6	0.014
SEPX-8-6-40-135	8/6	40	(6.5-7.5)-(4.5-5.5)	135	6	0.014
SEPX-10-7-30-135	10/7	30	(8.5-9.5)-(5.5-6.5)	135	6	0.014
SEPX-10-7-40-135	10/7	40	(8.5-9.5)-(5.5-6.5)	135	6	0.014



Medtronic

Invatec S.p.A.

Via Martiri della Libertà 7
25030 Roncadelle (BS)
Italy
Tel: +39.030.2589311

Medtronic

710 Medtronic Parkway NE
Minneapolis, MN 55432
USA
Tel: +1.763.514.4000

Medtronic International Trading Sàrl

Route du Molliau 31
CH-1131 Tolochenaz
Switzerland
Tel: +41.21.802.7000

Medtronic of Canada Ltd.

99 Hereford Street
Brampton, Ontario L6Y 0R3
Canada
Tel: +1.905.460.3800

Medtronic Latin America

3750 NW 87th Avenue, Suite 700
Miami, FL 33178
USA
Tel: +1.786.709.4200

Medtronic International Ltd.

49 Changi South Avenue 2
Singapore 486056
Tel: +65.6436.5000

Medtronic Australasia Pty Ltd.

2 Alma Road
Macquarie Park, NSW 2113
Australia
Tel: +61.29857.9000

Medtronic New Zealand

Unit N16, Mezzanine Level 5
Gloucester Park Road
Onehunga
Auckland
New Zealand

Medtronic Korea Co., Ltd.

5F, Sajo Building
1001 Daechi-dong, Kangnam-ku
Seoul, 135-280
Korea
Tel: +82.2.3404.3600

Medtronic META FZ-LLC

Office Park, Block D, 2nd Floor
PO Box 500638
Dubai Internet City | Dubai,
United Arab Emirates
Tel: +971.4.818.2666

medtronic.com/apv